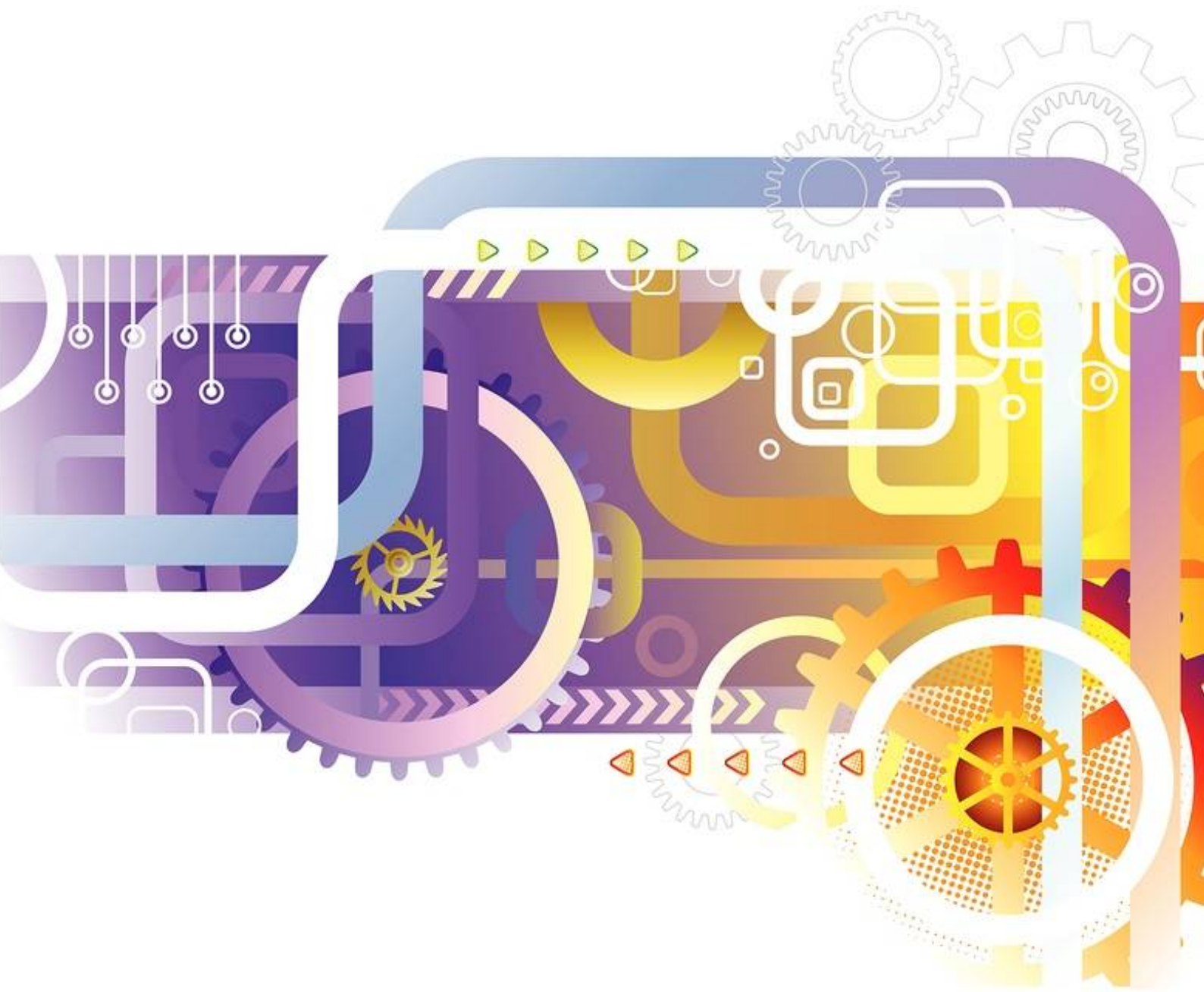


EXCEL SOLUTIONS ASIA



TRADITIONAL TEAM BUILDING

Team Based Solutions



TRADITIONAL TEAM BUILDING

Event Overview

During this event each team will face a series of challenges that will test the skills of each team member in a multitude of ways. Each team will be awarded points based upon their performance and the success or partial completion of the tasks. These points will be calculated at the end of the event to assess which was the most successful team on the day.

Phase 1 (Planning)

Each challenge normally comprises of approximately 5-10 minutes for understanding, communicating and planning.

Phase 2 (Implementing)

After the planning phase, each team will need to set their plan into action and perform the task ahead. Normally each task will take approximately 20-30 minutes to perform.

Phase 3 (Assessing)

After each of the challenges is complete, time will be dedicated to review the team performance in an indirect, non judgmental manner covering what was achieved, what was not achieved, what could have be improved, how did the team communicate, who took or was assigned the leadership role, etc.

Phase 4 (Evolving)

Moving to the next challenge teams need to remember and action the results of the previous successes and other areas that need improvement. As the team progress throughout the day so in turn should their success by learning what works, what doesn't "experiential learning and situational leadership skills"

"All team members are winners" and that will be emphasized at the end of the event during the closing segment.



TRADITIONAL TEAM BUILDING

Event Agenda

13.00 – 13.10 Welcome and Warm Up

- Welcome group
- Afternoon Agenda
- Health and Safety

13.10 - 15.45 Teams will attempt to achieve approximately 5-6 challenges

Sample Challenges

1st Challenge – 3 Rock Crossing

All team members are to get from island A to island B without touching the ground using only the rocks to assist ...

2nd Challenge – Color Blind

Blind-folded team members are to place the colored jewels back into their containers. Only the team leader can see giving instructions ...

3rd Challenge – Virus

Place the containers back into their correct zones - color coordinating the liquid with the station ...

4th Challenge – Island Hopping

All team members to get from the mainland A to the mainland B crossing from islands to island using resources provided

5th Challenge – Blind Intent

Team members are to erect a tent under the guidance of the team leader. Team members are unable to see ...

Return Briefing Room / Summarization

Each team are to give a short presentation on the skills they have learned and how they can be applied back at the workplace.

15.45 – 15.55 - Awards

Announce winning team / Hand out prizes



Copyright © Excel Solutions Asia



Solutions Asia



Copyright © Excel Solutions Asia



Copyright © Excel Solutions Asia



TRADITIONAL TEAM BUILDING

Event Quotation

For a quotation please provide Excel Solutions Asia with your group size, location and event date!

What is included

The price is inclusive of photos, filming, crystal trophy, facilitators, local event staff, tailored event program, set up and management, all materials and design.

What is not included

The above price is non-commissioned and excludes any meeting room or hotel rental, coffee, food & or refreshment breaks during the event.

Benefits of the event;

- Involvement of everyone in the process
- Higher likelihood of implementation of new ideas
- Widens the circle of communication
- Shared information means increased learning
- Increased understanding of other peoples perspectives
- Increased opportunity to draw on individual strengths
- Develops personal relationship
- Have Fun!



A REVOLUTION IN TEAM BUILDING SOLUTIONS